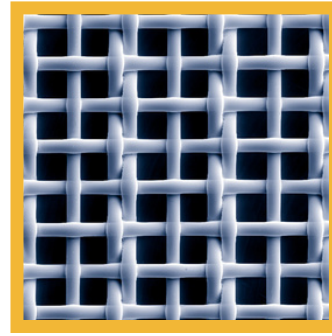


## SEFAR NYTAL PA - GG

ARTÍCULO	APERTURA DE MALLA	DIÁMETRO DEL HILO	NRO DE HILOS	SUPERFICIE LIBRE %
PA - 12 GG	1800	500	4.4	61
PA - 14 GG	1600	450	5.0	60
PA - 15 GG	1400	400	5.4	59
PA - 16 GG	1320	400	5.8	59
PA - 17 GG	1250	350	6.1	58
PA - 18 GG	1180	350	6.5	59
PA - 19 GG	1120	350	6.7	58
PA - 20 GG	1000	320	7.5	57
PA - 22 GG	950	300	8.0	57
PA - 23 GG	900	300	8.3	56
PA - 24 GG	850	300	8.7	53
PA - 26 GG	800	280	9.4	53
PA - 27 GG	750	280	9.7	52
PA - 28 GG	710	260	10.5	53
PA - 30 GG	670	260	10.8	53
PA - 31 GG	630	240	11.5	53
PA - 32 GG	600	240	11.9	51
PA - 34 GG	560	240	12.3	49
PA - 36 GG	530	220	13.3	50
PA - 38 GG	500	220	13.7	47
PA - 40 GG	475	200	15.0	48
PA - 42 GG	450	200	15.4	48
PA - 44 GG	425	200	16.0	46
PA - 45 GG	400	180	16.8	44
PA - 47 GG	375	180	17.5	45
PA - 50 GG	355	160	19.4	45
PA - 52 GG	335	160	20.2	44
PA - 54 GG	315	160	21.0	45
PA - 58 GG	300	140	21.7	45
PA - 60 GG	280	140	23.8	45
PA - 62 GG	275	140	24.1	44
PA - 64 GG	265	140	25.0	45
PA - 66 GG	250	120	26.5	46
PA - 68 GG	243	120	28.0	44
PA - 70 GG	236	120	28.0	44
PA - 72 GG	224	120	29.0	42
PA - 74 GG	212	120	30.0	40



## SEFAR NYTAL PA - Milling

ARTÍCULO	APERTURA DE MALLA	DIÁMETRO DEL HILO	NRO DE HILOS	SUPERFICIE LIBRE %
PA - 3	300	100 + 2x60	20.4	54
PA - 4	280	100 + 2x60	25.5	53
PA - 5	250	100 + 2x60	27.5	51
PA - 6	212	90 + 2x60	32.0	49
PA - 7	200	80 + 2x60	33.5	48
PA - 8	180	80 + 2x60	35.7	46
PA - 8 1/2	160	70 + 2x60	40.0	44
PA - 9	150	70 + 2x60	42.5	44
PA - 9 1/2	140	60 + 2x60	43.0	43
PA - 10	132	60 + 2x50	47.0	44
PA - 10 1/2	125	60 + 2x50	48.5	40
PA - 11	118	60 + 2x50	50.5	42
PA - 12	112	60 + 2x50	53.0	40
PA - 12 1/2	106	50 + 2x43	56.0	40
PA - 13	100	50 + 2x43	57.0	48
PA - 14	95	50 + 2x43	61.0	38
PA - 14 1/2	90	50 + 2x43	62.5	37
PA - 15	85	50 + 2x43	65.5	34
PA - 17	80	50 + 2x43	68.0	35
PA - 20	75	50 + 2x43	70.0	34
PA - 21	71	50 + 2x39	74.0	33
PA - 25	63	43 + 2x43	78.0	30